



# Suspicious packages

Deputy Les Wiemers

Weld County Sheriffs Office

Aims Campus Resource Officer



Recent real-world events require that we view our surroundings in a new and different light. Terrorist attacks increased public awareness of safety procedures that can protect us.

The United States Postal Service and Aims College Mailing Services do everything reasonably possible to insure your safety. All incoming mail is screened to protect you. If anything suspicious is found it will be stopped in the postal operation process.



***However, no screening  
is 100% effective.***

This program was developed  
to help you recognize a  
potentially harmful piece of  
mail and instruct you what to  
do if you get suspicious mail.



# General guidelines

- Do not eat or drink while handling the mail.
- If you have open cuts or skin lesions on your hands, wear disposable vinyl gloves.
- Upon completion of your postal task wash your hands with anti-bacterial soap and warm water.



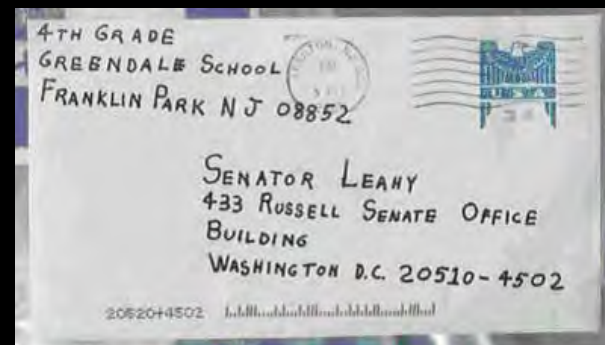
# Two main threats



## Bomb



## Anthrax





# What is anthrax?

- Anthrax is a bacterial disease caused by *Bacillus Anthracis*.
- Anthrax occurs in domesticated and wild animals.
- Anthrax is an invisible bacteria that can live in soil, water, and dead animals.



*Picture of anthrax spores*



# Three forms of Anthrax

- **Skin form** : May be contracted by exposure to spores. It first appears as a rash or blister that may resemble a bite, progressing to a painless ulcer with a black area in the center. It can be treated effectively with antibiotics. Represents 95% of cases of human anthrax.
- **Inhalational form** : May be contracted by breathing in spores or dispensing within a closed space. It first appears as flu like symptoms.
- **Gastrointestinal tract form** : May be contracted by ingesting improperly cooked, contaminated meat.





*The risk of contracting any disease from the outside of any envelope is extremely low.*

However, treatment with antibiotics begins immediately after exposure:

- Penicillin
- Doxycycline
- Ciproflaxin (Cipro)





# What mail is suspicious?

*Anything out of pattern!*

- If you have received a piece of mail which looks different from what you receive usually, be cautious.
- Remember, Aims College Mailing Services usually delivers mail at the same time and leaves it at the same spot every day. If you find a piece of mail in a different place, it could be left by somebody else.



# What mail is suspicious?

*Look for a combination of the following signs:*

- No return address
- Restrictive markings
- Misspelled words
- Badly typed or written





# What mail is suspicious?

*Look for a combination of the following signs:*

- Excessive postage
- Possibly mailed from foreign country
- Lopsided
- Rigid or bulky





# What mail is suspicious?

*Look for a combination of the following signs:*

- Oily stains, discolorations, or crystallization on wrapper
- Protruding wires
- Excessive tape or string
- Rattling or other sounds
- Strange odor





# What mail is suspicious?

- Uneven, spongy appearance
- Powder on surface
- Powder on hands
- Powder flies when handled



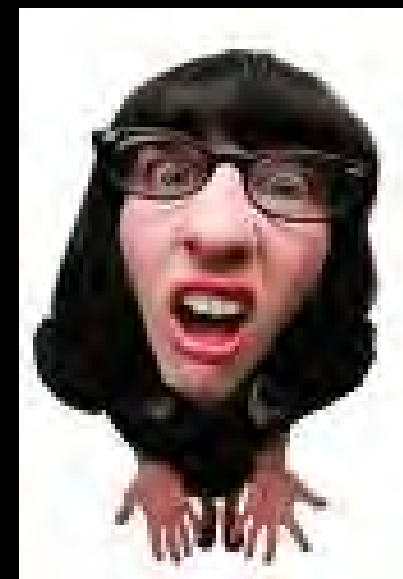


If you receive a suspicious letter or package, what should you do?

➤ DO NOT OPEN

➤ Do not move

➤ Do not shake or bump





If you receive a suspicious letter or package, what should you do?

Place it in a plastic bag or cover the envelope, letter, and contents.



If you receive a suspicious letter or package, what should you do?

Notify your immediate supervisor and the Aims Campus Resource Officer.



(NO CELL PHONES!!!)



If you receive a suspicious letter or package, what should you do?

- Turn A/C off.
- Leave the room and close the door.

# If you receive a suspicious letter package, what should you do?



- **WASH** your hands with in a weak bleach solution or with soap and water.
- Ensure that all persons who have touched the letter wash their hands.
- If possible, take a shower.





# If you receive a suspicious letter or package, what should you do?

- List all people who were in the room when this suspicious letter or package was recognized.
- Keep this group together until Law Enforcement arrives.



If you receive a suspicious letter or package, what should you do?

Follow all instructions from the Emergency Response Team

# Deputy Les Wiemers



## Thank you

- Weld County Sheriffs Office
- Aims Campus Resource Officer
- Office: 970-356-4015 X4174
- Cell: 970-539-2171
- Email: [lwiemers@co.weld.co.us](mailto:lwiemers@co.weld.co.us)  
or: [security@aims.edu](mailto:security@aims.edu)
- Website: [Weldsheriff.com](http://Weldsheriff.com)

